

MANORVALE MAIL



ISSUE 7 - MONDAY 1ST JUNE 2026

UPCOMING EVENTS

JUN

1

1st Camp Instalment
Due

8

Public Holiday - NO
SCHOOL

18

Celebration of
Learning 2:30

26

Last Day of Term

RESPECTFUL

WE ARE KIND AND FAIR, WE
LISTEN AND CARE.

RESPONSIBLE

WE COME READY, WE DO
OUR PART. WE MAKE GOOD
CHOICES FROM THE START.

RESILIENT

WE TRY AND NEVER QUIT,
WE LEARN FROM IT.

ASPIRING

WE ALWAYS TRY, WE AIM
HIGH.

CONTACT INFO

Email:

manorvale.ps@education.vic.gov.au

Phone:

9741 6300 - Office Hours 8:30-3:30

Website:

<https://www.manorvaleps.vic.edu.au/>

PRINCIPAL NEWS

Dear Students, Parents, and Staff,

At our school, we are committed to providing the very best learning experiences for our students. Every day, our staff work collaboratively, reflect on their practice, and embrace evidence based approaches to teaching and learning to ensure every child has the opportunity to thrive. Recently, we have welcomed educators from other schools who have visited to see the outstanding work happening in our classrooms. These visits are a wonderful recognition of the dedication, expertise, and professionalism of our staff. It is a testament to the strong culture of continuous improvement that exists across our school.

We are proud that our teachers and support staff are not only implementing best practice but are also contributing to the wider educational community by sharing their knowledge and experiences with others. This willingness to learn, innovate, and collaborate benefits not only our students but also helps strengthen education beyond our school gates.

We thank our staff for their ongoing commitment to excellence and celebrate the positive impact they make every day. As a school community, we should all feel proud of the work being done and the recognition it continues to receive.

EVENTS

The grades 3 and 4 students went on an excursion to EcoLinc. The students took Puddles the Platypus along and were busy learning about growing plants and took some clippings and seeds home to grow. A huge thank you to Julie Bates, Peter Courtney, Tracey Pulford, Meg Sammut, Jielin Fang, Amy Cooper, Cynthia Brownlie, Stuti Adroja, Anita Salesa, Victoria Mangani and Isabelle Graves for organising and participating on the day.

ASSEMBLY DATES AND TIMES

Assemblies for the term will be held on Fridays on the 5th June and 19th June at 2:30pm and the end of term assembly will be on 26th June.

BUILDINGS

The concrete pour will be occurring within the next couple of weeks ahead of schedule. YAY!!! There should be a steel structure completed before we go on school holidays. The building company is making such amazing progress.



ATTENDANCE

“Rise and Shine, 8:30 is the time”

It is important for students to be here at 8:30am for classes to begin at 8:40am. If your child comes after 8:40am they need to go to the office to get a late pass.

SOCIAL MEDIA – SCHOOL INSTAGRAM AND FACEBOOK

We have started our Instagram and Facebook pages. Please find and follow us for insights into the school and events that are happening.

THE POWER OF POSITIVE BYSTANDERS

At school, every student plays an important role in creating a safe, respectful and inclusive environment. While we often focus on the choices made by individuals, it is equally important to recognise the impact of bystanders, those who witness situations involving unkind, unsafe or inappropriate behaviour.

A positive bystander does not support or encourage poor choices. Instead, they demonstrate our school values by choosing to walk away, seek help from a trusted adult, include others, or calmly speak up when it is safe to do so. When students refuse to laugh at, join in, or ignore negative behaviour, they help set a positive standard for everyone. Teaching children to be responsible bystanders helps build confidence, empathy and leadership. It reminds them that their actions and inactions can make a significant difference to the wellbeing of others. Together, we can encourage our students to show Respect, Responsibility, Resilience and Aspiration by standing up for what is right and helping create a school community where everyone feels valued and supported.

Kind Regards,
Brianna



The Wellbeing Wrap

RISE AND SHINE 8:30'S THE TIME

This term we will be celebrating classes who have less than 3 late passes a week with Zooper Dooper icy poles as a reward.

If you do not wish for your student to participate please contact Jody via email.
jody.cole@education.vic.gov.au



STUDENTS OF THE WEEK

<p>Prep A Saini</p>	<p>Solana for making fantastic progress in phonics! Solana has been working hard to recognise letter sounds and blend them together correctly when reading words. Avery for consistently remembering the vocabulary we learn in class and doing a wonderful job using new words during activities and discussions.</p>	<p>3A Bates</p>	<p>Savannah for representing Manorvale PS in a positive way and embracing the learning opportunities on our excursion to Ecolinc. Darci for representing Manorvale PS in a positive way and embracing the learning opportunities on our excursion to Ecolinc.</p>
<p>Prep B Rosewarne</p>	<p>Balquees for showing resilience in her learning. She has shown huge improvement in writing her name. Fantastic effort Balquees! Nishaan for aspiring to always try his hardest to blend words together. We love his positive attitude toward learning!</p>	<p>3/4B Courtney</p>	<p>Fiona for being polite and courteous in all aspects of school life. PJ for aspiring to do his best in all subjects and activities.</p>
<p>Prep C Schaap</p>	<p>Hudson for showing great improvement in joining the group on the floor and concentrating during instruction. Isla for trying hard to focus when writing letters and numbers on mini whiteboards.</p>	<p>3/4C Pulford</p>	
<p>1A Anderson</p>	<p>Safa for learning some new tricky words and saying the sounds to read a 3 sound word. Marwa for saying the sounds and reading the words in her levelled book.</p>	<p>3/4D Sammut</p>	<p>Nira for making positive learning choices and trying their best all week. Hunter for consistent effort and positive participation during class.</p>
<p>1B Tompkins</p>	<p>Alfie for consistently using key vocabulary words when saying or writing a sentence. Eh Nay Blut Wah for his growing confidence in sharing his ideas in full sentences with the whole class.</p>	<p>5A Tarbet</p>	<p>Madeline for being persistent through challenges in English! Kiana for a great character analysis in English!</p>
<p>2A Flanagan</p>	<p>Minimae for showing care in her work through beautiful handwriting and improving her use of punctuation. Isaiah M for showing a fantastic attitude in Math's by always trying his best and eagerly wanting to learn more.</p>	<p>5B Gittens</p>	<p>Jason for making respectful choices and trying his best to communicate his needs. Kaiza for working hard to regulate his emotions in a respectful and productive way.</p>
<p>2B Nag</p>	<p>Brax for being resilient by continuing to try even when tasks are difficult, and striving to achieve success in every lesson. Kanisha for aspiring to achieve success in every lesson and always giving her best effort.</p>	<p>6A Butler</p>	
		<p>6B Chandra</p>	<p>Ghazal for contributing to class discussions and sharing her ideas and thoughts. Well done! Anna for giving her work a go before asking for help and not being afraid to seek help. Good job!</p>

STUDENTS OF THE WEEK

<p>Italian Signora</p>	<p>Winter for excellent reading in the Italian language of the "Giacco" story. Lavosan for always having a go and being an enthusiastic participant in every Italian session.</p>
<p>PE Spooner</p>	
<p>Library Hooper</p>	<p>Owen for always trying his hardest during library sessions and being a fantastic role model. Ashton for consistently borrowing new and interesting library books.</p>
<p>Art Carlisle</p>	<p>Sebastian M for drawing a great turtle picture.</p>
<p>Stem Kershaw</p>	<p>Sebastian M for working hard to complete a procedure showing how to plant seeds. I'm super proud of you Sebastian! Naw Paw for regularly participating in class discussions and being interested and engaged in learning.</p>
<p>ES</p>	
<p>Wellbeing Team</p>	<p>Dau for consistently following his Successful Start Plan and promptly returning to his learning.</p>
<p>Office</p>	<p>Giacomo for being a hero and removing a spider from the office.</p>
<p>OSHC</p>	<p>Jason G for showing improvement in behaviour and participation, as well as demonstrating leadership skills. Aamani for being helpful and cooperative with others as well as showing resilience and problem-solving skills.</p>
<p>JSC</p>	<p>Eh Nay Blut Wah for being respectful and responsible during class time/</p>
<p>Principal</p>	<p>AJ for looking after his friends.</p>

Grade 3 and 4 Ecolinc Excursion

On Wednesday the 27th of May the Grade 3 and 4 students went to Ecolinc in Bacchus Marsh with a focus of learning about indigenous plants. Everyone had an amazing time. We rotated through 4 different activities. We visited the green house and learnt about propagation; we planted seeds and cuttings of native plants and got to bring them home to grow. In the indigenous garden we were detectives, looking for plants that had specific uses. We found plants that were used for food, medicines, making tea and bread. There was also an activity where we crushed leaves of plants and explored the scents given off by them. One even smelt like chocolate. This was the favourite of many of the students. Lastly, we examined traditional tools and items used by first nations people in their everyday lives. 3A also took 'Puddles' the platypus on the excursion and got to meet a taxidermy platypus, which we got to touch.

WHAT THE STUDENTS SAID:

"We were planting the plants in cups. It was fun to do. Puddles was also helping."

"We had so much fun at Ecolinc, it was the best excursion ever."

"We saw a dead platypus and learnt why it died and got to touch it. It was interesting."

"We went to the Ecolinc greenhouse, and we had to put on gloves that were uncomfortable. We planted seeds and got to take our plants back to school."

"We made paper cups and could choose pig face, round mint or salt bush to grow. I chose round mint."



GRADE 6



LIFE EDUCATION INCURSION

TAKE A BREATH



We got to meet Harold the Giraffe!



This week, our Grade 6 students participated in the engaging and interactive Take a Breath incursion with Life Education Victoria. Students explored the important topic of vaping and smoking, learning about the harmful chemicals found in these products and the impact they can have on our bodies, minds and wellbeing.

It was a fun, engaging and important learning experience!

WE LEARNED ABOUT:



HARMFUL CHEMICALS

The dangerous chemicals in cigarettes and vapes.



HEALTH EFFECTS

How vaping and smoking affect our bodies and minds.



SOCIAL & FINANCIAL IMPACTS

The impact on our relationships, wellbeing and wallets.



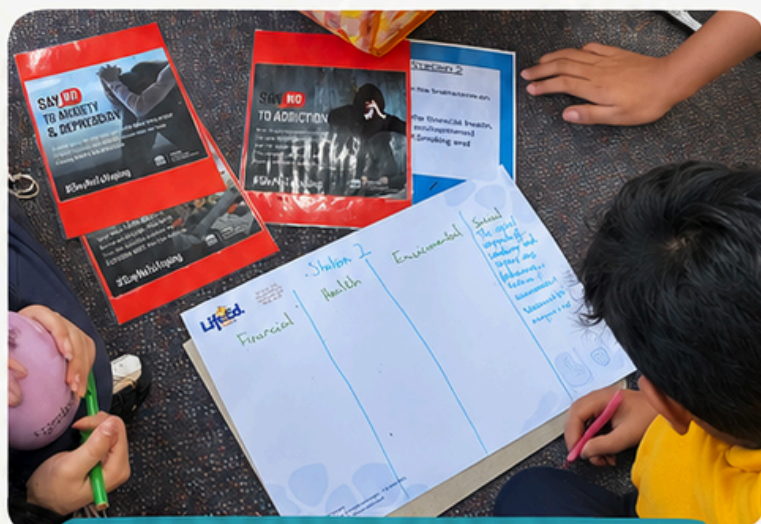
SAYING 'NO' WITH CONFIDENCE

Practising ways to say no if someone offers you a vape or cigarette.



EXPLORING THE HISTORY

We looked at how smoking and vaping have changed over time.



TEAMWORK & DISCUSSION

We worked together to understand the impacts and share ideas about healthy choices.

* Thank you to Life Education Victoria for an amazing incursion!
We learnt a lot, had fun and will Take a Breath for our future.



DATES TO REMEMBER

Term 2		Consent/ Payment Due	Event Date
Select Students	Camp Installment #1 Due	1/06/2026	7/12 - 9/12/2026
Yr 5 Students	Life Ed Puberty Education		4/06/2026
Whole School	Public Holiday - NO SCHOOL		8/06/2026
Yr 3-4	RACV Safety Incursion		12/06/2026
Yr 6	Immigration Museum Excursion	8/06/2026	18/06/2026
Yr 3-4	3/4 Planks Incursion	8/06/2026	22/06/2026
Whole School	Last Day of Term		26/06/2026

PARENTS' CLUB NEWS

The Parents' Club would like to extend a warm welcome to all our families, especially those who are new to the school community this year.

We're a friendly group of parents and carers who work alongside the school to support students, build community connections, and help make school life even more enjoyable.

Throughout the year, the Parents' Club help to organise events, create fundraising activities, and social opportunities that bring families together. Whether you can help regularly or just occasionally, we'd love to have you involved in whatever way suits you.

If you would like us to contact you when we have events coming up, please extend your details & interest to Leanne or Taylor in the front office.

Keep an eye on the newsletter for upcoming events and meeting dates—we look forward to getting to know you this year!

Uniform shop

Wednesday and Friday

2.45pm - 3.15 pm



Join Manorvale Primary School Parents' Club!

Want to meet new people, have fun, and help make a positive change at school?

It's easier than you think!

Why Join?

Meet new friends – Connect with other MPS families in a relaxed, friendly setting.

Have a say – Help out with school events and fundraisers that benefit your kids.

Keep it simple – You can contribute however works best for you, whether it's a little time or just joining in on events.



Get Involved. Have Fun. Make a Difference.

By joining the Manorvale Parents' Club, you'll not only enrich your own family's experience at MPS, but you'll also contribute to a positive, supportive school environment for everyone.

Whether you're looking to volunteer your time, offer skills, or just be a part of the community, there's a place for you here!

Want to Join?

Contact us at (03) 9741 6300 to learn more.

**End of Terms
Lunches**

**Mother's
& Father's
Day Stalls**

**The
Second-Hand
Uniform
Shop**

LET'S CELEBRATE

Learning Together



Thursday 18th of June 2:30pm

CSEF

The CSEF (Camps, Sports and Excursions Fund) is provided by the Victorian Government to assist eligible families with the cost of school trips, camps and sporting activities.

Families who hold a valid concession card or are temporary foster parents may be eligible to apply.

If you think you may qualify and have not yet applied, please contact the school office for more information and application forms.

We encourage all eligible families to take advantage of this valuable support program.

This year the CSEF payment is \$400 per child.

This can be a huge help and with a few camp spots still open, families who are eligible for CSEF would only need to pay \$31 out of pocket for camp this year.



The School Photographer®

A friendly reminder to

**ORDER
SCHOOL
PHOTOS!**

**You still have time to
place your order!**



IT'S NOT TOO LATE!

TO AVOID A LATE ORDER ADMINISTRATION FEE HEAD TO OUR WEBSITE TO VIEW OUR PACKAGES AND TO PLACE YOUR ORDER

Manorvale Primary School - Werribee

VISIT OUR WEBSITE & ENTER THIS CODE

7DT9NLTD

theschoolphotographer.com.au

UPDATE FROM OUR KITCHEN GARDEN

Some keen eyed students spotted insect eggs on some of our baby veggies this week.

Tim and the Year 2 crew set up a netting system which will hopefully stop those pesky pests from enjoying our growing harvest.

We have been busy planting seeds over the last couple of weeks and are looking forward to seeing them sprout.

They are currently enjoying the warmth of the Autumn sun from inside our new greenhouse.

Our current crops have been enjoying the recent rain from their home in the garden beds.

Please drop by and have a look!



Outside School Hours Care

Newsletter



Camp Australia
Guiding Children's Growth

25/05/2026

Manorvale Primary School

Your OSHC.



A message from your Coordinator

Dear Parents and Families,

We are excited to share that we have planned many fun and engaging experiences for our Winter Theme over the coming weeks. Children will enjoy a variety of creative, sensory, and hands-on activities that encourage learning, imagination, and collaboration.

We are also looking forward to celebrating **World Play Day on 11 June**. As part of the celebration, children will become **Theme Park Designers** and use their creativity to design and build their own amazing theme parks using the maps provided in the booklet, along with Lego, blocks, and craft materials.

This experience will support children's problem-solving, teamwork, creativity, and construction skills while encouraging the joy of play and learning together.

We would also like to inform families that we have updated our afternoon tea menu to include some of the children's favourite snacks. In addition, Camp Australia has increased our food budget, allowing us to provide a wider variety of quality food options for the children to enjoy.

We look forward to another exciting and enjoyable weeks with all the children!

Activities coming up

- Winter Week
- World's Play Day 2026 – Stop and Play
- Legos Construction Week

Make a booking

Join in the fun of Outside School Hours Care activities and experiences with Your OSHC and Rocketeers.

[Book now](#)

Register free and book in 24/7 via our app

To attend our program, you must register your child. You can register an account with us at pp.campastralia.com.au or by downloading our Camp Australia smartphone app from the Apple App Store or on Google Play. Once registered, it's easy to make bookings and manage your account.



Find out more and book now at www.campastralia.com.au



ROCKETEERS



**SCHOOL HOLIDAY
BOOKINGS
NOW OPEN**

Programs vary by location and are subject to change. Jump on our website to find out what's happening at your local Rocketeers.

Child Care Subsidy (CCS) available for eligible families.

*Please note the fees on the following pages are only of the maximum Child Care Subsidy (CCS) a family may be entitled to. To find out your eligibility, log into MyGov.

www.campastralia.com.au/rocketeers

by  Camp Australia

FUN AWAITS!

YOUR WINTER HOLIDAY PROGRAM





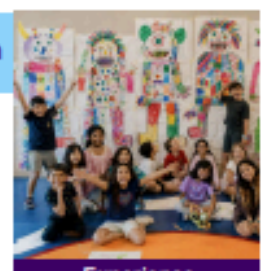





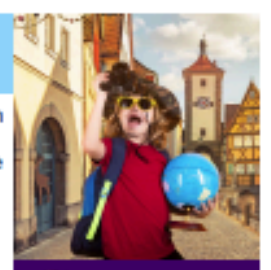
ROCKETEERS

Extraordinary Holiday Adventures

Manorvale Primary School

Address: 232 - 246 Greaves Street North WERRIBEE VIC 3030

Phone: 0405 428 328 Program Times: 07:00 am - 06:30 pm

<p>Mon 29 Jun Operation: Opening Ceremony</p> <p>The adventure begins now! Step into a day full of colour, music, and celebration as we kick off something amazing together. Let the excitement begin!</p> <p>Full Fee \$77.79 After Max. CCS* \$7.78</p>	 <p>Base Camp Day</p>	<p>Tue 30 Jun Project: Striker Showdown</p> <p>Kick off the holiday with your awesome soccer skills! Build your own Soccer Striker Kit, design your player, test epic kicks, and learn about motion while scoring goals. And the best part, you can take home your kit for more action-packed fun!</p> <p>Full Fee \$116.29 After Max. CCS* \$11.63</p>	 <p>Project</p>
<p>Wed 01 Jul Adventure: Toy Story 5</p> <p>Join Woody, Buzz and Jessie for a brand-new Toy Story adventure! When a new toy takes over, the gang must work together to save playtime.</p> <p>Full Fee \$133.99 After Max. CCS* \$13.40</p>	 <p>Excursion</p>	<p>Thu 02 Jul Big Art Day: Monster Mash</p> <p>Grab your boldest ideas! A special guest from Star Time is coming to help you draw, craft and build a giant monster mural, then show it off with a fun monster dance. Let's mash it up!</p> <p>Full Fee \$113.61 After Max. CCS* \$11.36</p>	 <p>Experience Takeover</p>
<p>Fri 03 Jul Operation: Winter Wonders</p> <p>Step into a sparkling winter world! From frosty forests to twinkling lights, today is full of cosy fun, magical moments, and winter adventures.</p> <p>Full Fee \$77.79 After Max. CCS* \$7.78</p>	 <p>Base Camp Day</p>	<p>Mon 06 Jul Project: Stop, Play, Rewind</p> <p>Dive into a full day of play inspired by the world's biggest sport – with creative LEGO® builds, high-energy outdoor games, and plenty of fun. Plus, build and take home your very own LEGO soccer boots!</p> <p>Full Fee \$106.29 After Max. CCS* \$10.63</p>	 <p>Project</p>
<p>Tue 07 Jul Adventure: Game On! at AFL Max</p> <p>Kick, run, climb and bounce your way through an indoor footy playground packed with action, challenges and high-energy fun at AFL Max!</p> <p>Full Fee \$141.69 After Max. CCS* \$14.17</p>	 <p>Excursion</p>	<p>Wed 08 Jul Operation: Tasty Travels</p> <p>Follow the flavours! Today's all about exploring the exciting world of street food, from sizzling bites to tasty traditions found in bustling markets around the globe.</p> <p>Full Fee \$77.79 After Max. CCS* \$7.78</p>	 <p>Base Camp Day</p>
<p>Thu 09 Jul Project: Festival of Flavour</p> <p>Score big with global flavours! Cook pancakes from the USA, tacos from Mexico, and sweet Beaver Tails from Canada, then decorate your table. Eat, celebrate, and taste your way through the World Cup host nations!</p> <p>Full Fee \$116.29 After Max. CCS* \$11.63</p>	 <p>Project</p>	<p>Fri 10 Jul Operation: European Explorer</p> <p>Pack your imagination and explore Europe! From castles to cafés, today is all about discovering new places, stories, and cultures from across the continent.</p> <p>Full Fee \$77.79 After Max. CCS* \$7.78</p>	 <p>Base Camp Day</p>

Visit campaustralia.com.au/rocketeers to join our next mission

by  **Camp Australia**

Big Art Week

4-8 May

Big Art Comp

4-29 May

A whole week of creative fun!



Create your masterpiece for the chance to WIN!



LEGO World Play Day

11 June

NEVER STOP PLAYING



©2026 The LEGO Group.

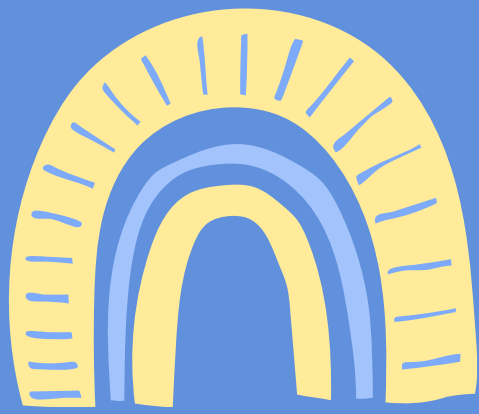
ULTIMATE WEEK OF Play

12-19 June



Find out more and book
campastralia.com.au/back-to-school-term-2

Your OSHC.



Office ✨ Messages



REPORTING STUDENT ABSENCES

To avoid receiving a phone call or a note/letter from the school when your child is absent, please remember to enter their absence by entering an "Attendance Note" on Compass.

If you are unable to do this or unsure of how, please contact the office.

If families have not advised the school of a student absence, a text message will be sent at 9:15am alerting the family. Families are expected to respond to the school with a reason for the absence as soon as possible.



CSEF

CSEF applications are now open.

Any new families and new siblings attending the school who have a valid healthcare card may be eligible to apply for the Camps, Sports and Excursions Fund.

Forms can be collected in the office.

MEDICATION

If your child requires medication to be taken during school hours, we are able to administer their medication at Sick Bay.

We require a letter from the prescribing medical professional, the medication and you will need to complete a Medication Authority Form.

Please contact the office to arrange.

CONSENT FORMS/EVENTS

Please ensure all notes are returned by the due date listed on your child's note.

We will NOT be accepting forms returned after the due date.

If any special considerations need to be made please contact the office.

SCHOOL BREAKFAST CLUBS PROGRAM



Breakfast Club runs on a Tuesday and Thursday morning from 8am - 8:30am.

Breakfast Club is held in the Gym foyer and is run by our terrific staff using food supplied by Foodbank.

FOODBANK

Foodbank help supply many items for our students and families. The wonderful Education Support staff Mrs P orders and distributes all the fresh fruit we get delivered for every class and ensures there are spare food items for children who may have forgotten their food.

Any families who require any additional food products should notify the office or Leadership for any assistance. Foodbank offer a range of supports, we are here to help families as much as we can.



STUDENTS WANTED!

My name is Leyton Smith and I am offering out of hours piano lessons to students who are interested in learning an instrument! I have **14 years of experience** playing piano and have 3 years of teaching experience.

If you are interested in your child partaking in piano lessons, please contact me via the details below!

MOBILE: 0448 772 997

EMAIL: leyton2204@gmail.com





TARNEIT

TARNEIT GARDENS SHOPPING CENTRE.
WICKFORD ROAD, TARNEIT 3029

29 MAY - 21 JUNE 2026

sesamestreetcircus.com.au

**BOOK NOW ON
ticketmaster® OR
CALL 0427 SESAME**

*Big Bird will not be appearing in this show. © 2026 Sesame Workshop. All rights reserved.

SHOW DATES & TIMES

- | | |
|--|---|
| Friday 29th May
6.30pm | Thursday 11th June
6.30pm |
| Saturday 30th May
10.30am 2.30pm 6.30pm | Friday 12th June
10.30am (Cookie Monster Street Party) 6.30pm |
| Sunday 31st May
10.30am 2.30pm | Saturday 13th June
10.30am 2.30pm 6.30pm |
| Wednesday 3rd June
6.30pm | Sunday 14th June
10.30am 2.30pm |
| Thursday 4th June
6.30pm | Wednesday 17th June
6.30pm |
| Friday 5th June
10.30am (Abby Cadabby Magic Wand Party) 6.30pm | Thursday 18th June
6.30pm |
| Saturday 6th June
10.30am 2.30pm 6.30pm | Friday 19th June
10.30am (Elmo Street Party) 6.30pm |
| Sunday 7th June
10.30am 2.30pm | Saturday 20th June
10.30am 2.30pm 6.30pm |
| Monday 8th June
2.30pm | Sunday 21st June
10.30am |
| Wednesday 10th June
6.30pm | |

TICKET PRICING

Seating	Adults	Children	Family
VIP Ticketing	\$85	\$85	
Gold Ticketing	\$55	\$45	
Silver Ticketing	\$45	\$35	\$125
Bronze Ticketing	\$35	\$25	

VIP will receive a Lanyard, Ringside Seats, Gift Bag & Meet Elmo.

Family ticket to a 6.30pm only.

*All prices plus booking fee.

*Children between the ages of 2-14 must be accompanied by an adult. EFTPOS and credit card available - transaction fee applies. Program subject to change. Prams not permitted inside the big top. Videos of the performance prohibited.



SAFETY TIPS AROUND SCHOOL CROSSINGS

Driving To and From school

- Always park legally and avoid dangerous maneuvers like U-turns and three point turns at or near the crossing.
- Always be alert for children and pedestrians.
- Children should exit the side of the car that is on the kerb side of the road **away from passing traffic at all times.**

Walking To and From School

- Plan your trip to school so that you are crossing the road at safe places, such as School Crossings.
- Always hold your child's hand up until the age of eight.
- Talk to your children about Stop, Look, Listen and Think, every time they cross the road.
- Drop off and pick up your child near the school gate, avoid calling them from across the road.



COMMON PARKING ISSUES AROUND SCHOOL CROSSINGS

To assist in keeping School Crossing areas a safe place for pedestrians and School Crossing Supervisors, Parking Officers monitor and patrol School Zones. Please find a list of common reasons for infringements below:

Double parking

- Do not stop next to another vehicle already parked next to a kerb, even if you are just quickly stopping to let a passenger in or out.

No Stopping Signs

- You must not park or stop in a No Stopping area for any reason.

School Crossings

- Do not park, or stop within or on a school crossing while it is in operation.

Bus Stop and Bus Zone Signs

- These areas are to be kept clear for school buses and public transport buses only

Nature Strips, Footpaths and Reservations

- Do not stop or park on nature strips, footpaths or reservations as it can create unsafe situations for children, as well as cause damage to council infrastructure.

Driveways

- Do not park fully or partially across a driveway, be respectful of residents that live in the area.

***If you would like more information relating to Parking Laws, please visit
Wyndham City: www.wyndham.vic.gov.au or
VicRoads: www.vicroads.vic.gov.au**



STOP LOOK LISTEN THINK

Regardless of your child's age or experience, to cross a road safely they should be taught to:

1. Stop at the kerb, not on the road.
2. Look in all directions for approaching traffic.
3. Listen for any vehicles coming.
4. Think about if it is safe to cross the road.

STOP

LOOK

LISTEN

THINK

SAFETY AROUND SCHOOLS

Children's crossings are usually part-time crossings that operate before and after school hours. When in use, red flags displaying the words **CHILDREN CROSSING** are used. Outside of these times, the area is not a pedestrian crossing.

During peak school zone times we ask parents and carers to take extra care to make sure they are parked safe and legally to ensure the safety of the children and themselves.

Watch for and obey the instructions of the School Crossing Supervisor who operates the school crossing.

School crossing supervisors need to have a clear field of vision in all directions around their crossing, so that they can spot approaching children and vehicles as soon as possible.



SCHOOL CROSSINGS

Pedestrians – Children and Adults

- When flags are displayed all pedestrians should use the crossing
- Always follow the instructions of the crossing supervisor.
- Make sure all traffic has stopped before stepping on to the crossing.
- Only cross when it is safe to do so and Stay Alert.

Drivers and Riders

- Should always watch out for children and pedestrians near schools.
- Must not overtake a vehicle stopping or stopped at the crossing.
- Must approach at a speed slow enough to safely stop.
- Must stop if a hand held 'Stop' sign is displayed.
- Must proceed only when all children and adults, including the supervisor are off the road.

Respect our school crossing supervisors. They do an essential job of keeping everyone safe.



FREE TRAVEL FOR KIDS

NOW AVAILABLE



JOHN LISTER
MP FOR WERRIBEE

*Grab your Youth myki
card at Werribee or
Wyndham Vale station!*

P: (03) 9741 1133 E: john.lister@parliament.vic.gov.au

  @johnforwerribee

 Tenancy 3, 1-13 Watton St, Werribee