

# MANORVALE MAIL



ISSUE 5 - FRIDAY 1ST MAY 2026

## UPCOMING EVENTS

MAY

4

Melbourne Writers  
Festival

5

Dental Visit Catch  
Up

7

Mother's Day Stall

27

Yr 3-4 Ecolinc  
Excursion

## RESPECTFUL

WE ARE KIND AND FAIR, WE  
LISTEN AND CARE.

## RESPONSIBLE

WE COME READY, WE DO  
OUR PART. WE MAKE GOOD  
CHOICES FROM THE START.

## RESILIENT

WE TRY AND NEVER QUIT,  
WE LEARN FROM IT.

## ASPIRING

WE ALWAYS TRY, WE AIM  
HIGH.

## CONTACT INFO

Email:

[manorvale.ps@education.vic.gov.au](mailto:manorvale.ps@education.vic.gov.au)

Phone:

9741 6300 - Office Hours 8:30-3:30

Website:

<https://www.manorvaleps.vic.edu.au/>

# PRINCIPAL NEWS

Dear Students, Parents, and Staff,

This term we have the great pleasure of introducing new staff to our team here at Manorvale! We would like to welcome Michael Spooner PE Teacher, Hayley Brennan Classroom Educational Support, Georgie Stark Classroom Educational Support and Jielin Fang Classroom Educational Support. We are excited about them joining our team here.

We hope you all had a lovely break with family and friends.

The weather was amazing to be able to go and explore outdoors. On April 25<sup>th</sup>, there was a contingency of Manorvale community members that joined me for the ANZAC Day service. It was wonderful to share this with the families and for the children to lay the wreath. Thank you to those that came for the service.

## MOTHER'S DAY STALL

The Mother's Day Stall will be held on Thursday 7<sup>th</sup> of May and opportunities for additional gift buying on Friday 8<sup>th</sup> of May. All gifts are \$5 and there will be no raffle this year. If you would like to volunteer to support the day, we would love for you to come along. Please contact the office if this is something you would like to do.

## ASSEMBLY DATES AND TIMES

Assemblies for the term will be held on Fridays on 8<sup>th</sup> May, 22<sup>nd</sup> May, 5<sup>th</sup> June and 19<sup>th</sup> June at 2:30pm and the end of term assembly will be on 26<sup>th</sup> June.

## **SCHOOL REVIEW**

Our school review has commenced. A School Review occurs every four years. The purpose is to recognise the school's achievements and to create goals and a pathway moving forward for the next four years. Thank you to the families, students and staff who have been part of the review process.

## **EVENTS**

The Dental Van Visit was at the start of term. Due to an overwhelming response, they will be returning to see more students.

The Grade 5 and 6 students were visited by the Courage to Care team. During this visit, volunteers ran an educational program that transforms bystander behaviour by empowering participants to stand up against prejudice, discrimination and bullying. Activities open their eyes to the consequences of the negative impact of the bystander and provide them with practical tools for action.

Students across different year levels of the school, represented the school during our district Cross Country event. Thank you to Teagan Ritchie who volunteered to support on the day as well as Michael Spooner who organised the day. Our JSC had the opportunity to attend a workshop with Joanne Ryan Federal MP. The students participated in activities to support a project that they will undertake at the school.

## **SOCIAL MEDIA – SCHOOL INSTAGRAM AND FACEBOOK**

We have started our Instagram and Facebook pages. Please find and follow us for insights into the school and events that are happening.

## BUILDINGS

Construction has begun on our school upgrade project!  
The foundations are nearly complete with the next step being pipework  
for utilities.



## ATTENDANCE

“Rise and Shine, 8:30 is the time”

It is important for students to be here at 8:30am for classes to begin at 8:40am. If your child comes after 8:40am they need to go to the office to get a late pass.

Kind Regards,  
Brianna



# The Wellbeing Wrap

## RISE AND SHINE 8:30'S THE TIME Every Day and Every Minute Counts!

Families, please remember that every day counts – and so does every minute! To ensure students are ready for the day's learning, they should arrive at school by 8:30 am.  
This week 118 late passes were issued!


Thank you for supporting your child to arrive at school on time and ready to begin the day.

We encourage all families to continue working with us to reduce this number even further and ensure students start their learning smoothly each morning.

If getting to school on time is proving challenging for your family, please reach out. We are happy to meet and work together to develop a plan that supports your child's attendance.

\*GASP\*



CLASS	LATE PASSES
Prep A	5
Prep B	5
Prep C 	2
1A	9
1B	15
2A	10
2B	3
3A	13

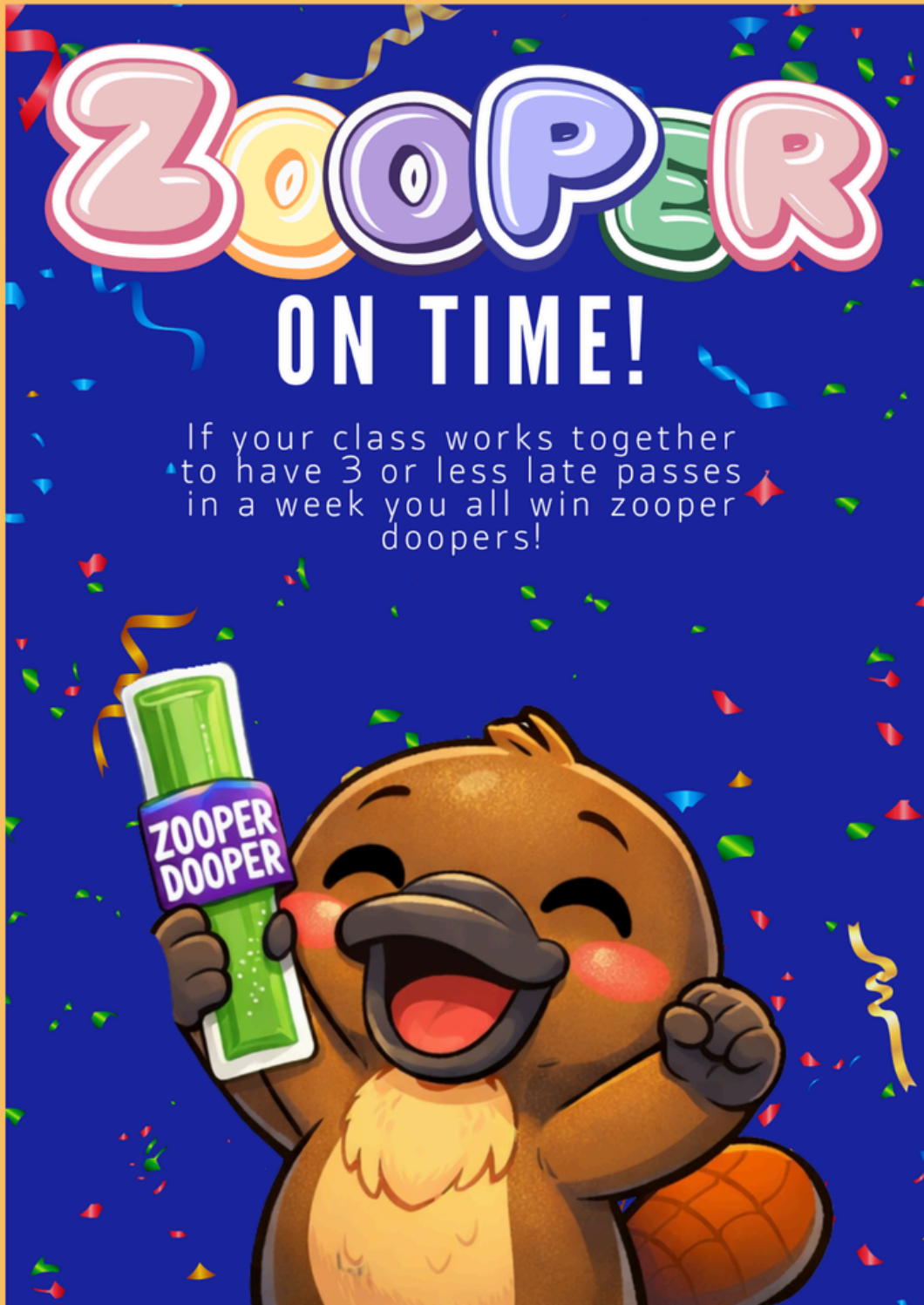
CLASS	LATE PASSES
3/4B	7
3/4C	4
3/4D	7
5A	9
5B	7
6A	11
6B	11

# The Wellbeing Wrap

## RISE AND SHINE 8:30'S THE TIME

This term we will be celebrating classes who have less than 3 late passes a week with Zooper Dooper icy poles as a reward.

If you do not wish for your student to participate please contact Jody via email.  
[jody.cole@education.vic.gov.au](mailto:jody.cole@education.vic.gov.au)



# STUDENTS OF THE WEEK

<p><b>Prep A</b> <b>Saini</b></p>	<p><b>Wallace</b> for making excellent progress in his reading development by consistently applying sound blending strategies practiced in class. <b>William</b> for his outstanding commitment to his learning and his consistently high level of engagement across all subjects and classroom activities.</p>	<p><b>3A</b> <b>Bates</b></p>	<p><b>Logan</b> for bringing a positive mindset and challenging himself in Numeracy lessons. <b>Amout</b> for bringing a positive mindset and challenging herself in numeracy lessons.</p>
<p><b>Prep B</b> <b>Rosewarne</b></p>	<p><b>Ivy</b> for showing resilience through settling more efficiently each day. You have already made huge progress. What an achievement! <b>Zion</b> for always showing respect towards your teacher and peers. Thank you for always putting your hand up. What a legend!</p>	<p><b>3/4B</b> <b>Courtney</b></p>	<p><b>Aseel</b> for doing her best in all subject areas. <b>Tayla</b> for being an excellent role model for other students.</p>
<p><b>Prep C</b> <b>Schaap</b></p>	<p><b>Aerith</b> for starting off Term 2 with strong resilience and perseverance in her learning. <b>Yadvi</b> for quickly adapting to returning for Term 2 and demonstrating a strong sense of independence in learning and classroom routines.</p>	<p><b>3/4C</b> <b>Pulford</b></p>	<p><b>Julia</b> for being a diligent worker and helping others with their work when finished her own tasks. <b>Noah</b> for being an attentive and enthusiastic learner during literacy and literature lessons.</p>
<p><b>1A</b> <b>Anderson</b></p>		<p><b>3/4D</b> <b>Russell</b></p>	<p><b>Owen</b> for consistently showing respect and being a positive role model to others in the classroom.</p>
<p><b>1B</b> <b>Tompkins</b></p>	<p><b>William</b> for consistently following his morning routine and completing learning tasks in the morning. Keep it up! <b>Yeshara</b> for being the first in the class to finish her home reading diary, keep up the great work!</p>	<p><b>5A</b> <b>Tarbet</b></p>	<p><b>Ellexi</b> for demonstrating maturity in the classroom and being overly productive! <b>Ryder</b> for showing resilience in English and putting the work the work in!</p>
<p><b>2A</b> <b>Flanagan</b></p>	<p><b>Sunrae</b> for taking pride in her learning by consistently producing neat and beautifully presented handwriting. <b>Angus</b> for showing resilience in Math by trying his best and not giving up, even when learning feels challenging.</p>	<p><b>5B</b> <b>Gittens</b></p>	<p><b>Adian</b> for trying hard to stay focused and contributing in class. <b>Henri</b> for always contributing to class discussions.</p>
<p><b>2B</b> <b>Nag</b></p>	<p><b>Mykayla</b> for responsibly helping others in the classroom with their learning. <b>Anna</b> for being respectful in the classroom by listening to others, following instructions, and using kind words.</p>	<p><b>6A</b> <b>Butler</b></p>	<p><b>Shee Lwe</b> for ensuring that he has organised his learning equipment and space. <b>Lilliah</b> for how she has spoken and interacted with her peers and classmates.</p>
 		<p><b>6B</b> <b>Chandra</b></p>	<p><b>Amelia</b> for great improvement in spelling. Keep it up! <b>Reuzl</b> for working extra hard and showing great curiosity. Well done!</p>

# STUDENTS OF THE WEEK

<p><b>Italian Signora</b></p>	<p><b>Connor</b> for trying his best in every Italian lesson. <b>Beatrice</b> for fantastic effort in locating the names of family in Italian.</p>
<p><b>PE Spooner</b></p>	<p><b>Thomas</b> for running well in Cross Country finishing 12th overall. <b>Anna</b> for running well in Cross Country finishing 8<sup>th</sup> overall and moving onto the next stage next month.</p>
<p><b>Library Hooper</b></p>	<p><b>Rosalie</b> for trying her hardest during library sessions. <b>Tyson</b> for caring for books by turning pages carefully when reading.</p>
<p><b>Art Carlisle</b></p>	
<p><b>Stem Kershaw</b></p>	<p><b>Eli</b> for making a positive start to Stem sessions and being a kind and thoughtful classmate. <b>Ryder</b> for tuning in to learning and being an excellent assistant while working in the garden.</p>
<p><b>ES</b></p>	<p><b>Connor</b> for consistently making right choices to come back to complete his work from his regulation break and having a go with new challenging worksheets. - Mrs. A <b>Beatrice</b> and <b>Waliwa</b> for working respectfully as a team in P.E. - Jess</p>
<p><b>Wellbeing Team</b></p>	<p><b>Harry</b> for having a growth mindset and spending the whole day in the classroom!</p>
<p><b>Office</b></p>	<p><b>Akeesha</b> for keeping our school clean by picking up rubbish</p>
<p><b>OSHC</b></p>	<p><b>Lima</b> for demonstrating excellent behaviour and respect. <b>Ila</b> for actively participating in all planned activities and supporting fellow peers.</p>
<p><b>JSC</b></p>	<p><b>Andrew F</b> for always ensuring the junior boys toilet is clean.</p>
<p><b>Principal</b></p>	<p><b>Zarliah</b> for helping other students in need.</p>

# DATES TO REMEMBER

Term 2		Consent/ Payment Due	Event Date
Select Students	Melbourne Writers Festival		4/5/26
Select Students	Dental Van Visit Catch Up		5/5/26-6/5/26
Whole School	Mother's Day Stall		7/5/26
Yr 3-4	Ecolinc Excursion	13/5/26	27/5/26
Whole School	Public Holiday - NO SCHOOL		8/6/26
Whole School	Last Day of Term		26/6/26

## PARENTS' CLUB NEWS

The Parents' Club would like to extend a warm welcome to all our families, especially those who are new to the school community this year.

We're a friendly group of parents and carers who work alongside the school to support students, build community connections, and help make school life even more enjoyable.

Throughout the year, the Parents' Club help to organise events, create fundraising activities, and social opportunities that bring families together. Whether you can help regularly or just occasionally, we'd love to have you involved in whatever way suits you.

If you would like us to contact you when we have events coming up, please extend your details & interest to Leanne or Taylor in the front office.

Keep an eye on the newsletter for upcoming events and meeting dates—we look forward to getting to know you this year!

### Uniform shop

Wednesday and Friday

2.45pm - 3.15 pm



# Join Manorvale Primary School Parents' Club!

Want to meet new people, have fun, and help make a positive change at school?

It's easier than you think!

## Why Join?

**Meet new friends** – Connect with other MPS families in a relaxed, friendly setting.

**Have a say** – Help out with school events and fundraisers that benefit your kids.

**Keep it simple** – You can contribute however works best for you, whether it's a little time or just joining in on events.



**Get Involved. Have Fun. Make a Difference.**

By joining the Manorvale Parents' Club, you'll not only enrich your own family's experience at MPS, but you'll also contribute to a positive, supportive school environment for everyone.

Whether you're looking to volunteer your time, offer skills, or just be a part of the community, there's a place for you here!

**Want to Join?** 

Contact us at (03) 9741 6300 to learn more.

**End of Terms  
Lunches**

**Mother's  
& Father's  
Day Stalls**

**The  
Second-Hand  
Uniform  
Shop**



# COURAGE TO CARE



## BECOMING UPSTANDERS

Last Friday, our Grade 5 and 6 students participated in the Courage to Care incursion, an initiative to teach them how to be upstanders.

Small actions make a **BIG** difference



### DURING THE WORKSHOP, STUDENTS EXPLORED:



UNDERSTANDING AND RESPECTING PEOPLE WITH DIVERSE NEEDS



APPRECIATING DIFFERENT LANGUAGES AND CULTURES



RECOGNISING AND RESPONDING TO BULLYING SITUATIONS



Through real-life stories and interactive discussions, students were challenged to think about the difference between being a **bystander** and an **upstander**.

They learned that even small actions—like speaking up, showing kindness, or including others—can make a **big difference**.



Our students showed **incredible maturity, empathy and insight** during the session. It was inspiring to see them reflect on their own choices and consider how they can contribute to a more **inclusive** and **respectful** community.

We are proud of our Grade 5 and 6 students for embracing this important learning and taking steps toward becoming **confident upstanders!**



# The School Photographer®

A friendly reminder to

**ORDER  
SCHOOL  
PHOTOS!**

**You still have time to  
place your order!**



## IT'S NOT TOO LATE!

TO AVOID A LATE ORDER ADMINISTRATION FEE HEAD TO OUR WEBSITE TO VIEW OUR PACKAGES AND TO PLACE YOUR ORDER

Manorvale Primary School - Werribee

VISIT OUR WEBSITE & ENTER THIS CODE

**7DT9NLTD**

[theschoolphotographer.com.au](https://theschoolphotographer.com.au)

**FREE**

# Tweens, Teens, and Screens

with Dr Justin Coulson

As seen on TV



Join **Dr Justin Coulson**, one of Australia's most trusted parenting specialists, for a session supporting parents and carers to navigate tweens, teens, and screens with confidence. **Bookings Essential.**

**Thursday 14 May**  
**7pm – 8:30pm**

**Manor Lakes Library**  
**and Online**



wyndhamcity  
city. coast. country

# Big Art Week

4-8 May

# Big Art Comp

4-29 May

A whole week of creative fun!



Create your masterpiece for the chance to WIN!



**LEGO** World Play Day

11 June

# NEVER STOP PLAYING



©2026 The LEGO Group.

# ULTIMATE WEEK OF Play

12-19 June



Find out more and book [campastralia.com.au/back-to-school-term-2](http://campastralia.com.au/back-to-school-term-2)

Your OSHC.

# Outside School Hours Care Newsletter



27/04/2026

Manorvale Primary School

Your  
OSHC.



## A message from your Coordinator

We are excited to share that our upcoming program will feature a fun and engaging **Outer Space theme**, along with special activities to celebrate **Mother's Day**. The children can look forward to a variety of creative, hands-on experiences inspired by these themes.

To celebrate our wonderful families, we will be hosting a **Grab-and-Go Breakfast** during our Before School Care session on **Monday, 11th May**. We warmly invite you to join us in the morning and enjoy a quick bite with your child.

In addition, our **Big Art Competition** has officially begun! We encourage all children to participate, showcase their creativity, and have fun expressing themselves through art.

We look forward to a fantastic and engaging week ahead. Thank you for your continued support.

## Activities coming up

- Space Week
- Mother's Day Week
- Important Dates
  - 11<sup>th</sup> May Families Day
  - 20<sup>th</sup> May Flower Day

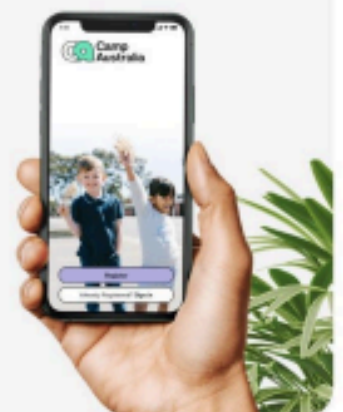
## Make a booking

Join in the fun of Outside School Hours Care activities and experiences with Your OSHC and Rocketeers.

[Book now](#)

## Register free and book in 24/7 via our app

To attend our program, you must register your child. You can register an account with us at [pp.campaustralia.com.au](http://pp.campaustralia.com.au) or by downloading our Camp Australia smartphone app from the Apple App Store or on Google Play. Once registered, it's easy to make bookings and manage your account.



Find out more and book now at [www.campaustralia.com.au](http://www.campaustralia.com.au)

# A MESSAGE FROM STEM

Good afternoon families and carers and welcome to another exciting and busy term of learning.

This term across all grades, students will be designing, planning, planting and caring for a kitchen garden and we need your help!

We want to be as sustainable and economical as possible so are asking for the following materials to use as seedling pots, mini greenhouses, and watering cans:

- Old towels
- Soft drink bottles with lids - washed and rinsed
- 2 and 3 litre milk containers - washed and rinsed

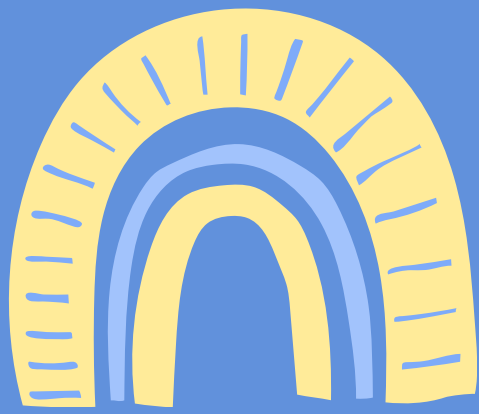
If you are able to donate a bag of compost or potting mix, we would be most grateful.

Donations can be left outside the STEM space (grade1 & 2 learning pod).

A big thank you to all the families and their amazing support so far we appreciate all your donations.

Many Thanks,  
Gaye





# Office ✨ Messages



## REPORTING STUDENT ABSENCES

To avoid receiving a phone call or a note/letter from the school when your child is absent, please remember to enter their absence by entering an "Attendance Note" on Compass.

If you are unable to do this or unsure of how, please contact the office.

If families have not advised the school of a student absence, a text message will be sent at 9:15am alerting the family. Families are expected to respond to the school with a reason for the absence as soon as possible.



## CSEF

CSEF applications are now open.

Any new families and new siblings attending the school who have a valid healthcare card may be eligible to apply for the Camps, Sports and Excursions Fund.

Forms can be collected in the office.

## MEDICATION

If your child requires medication to be taken during school hours, we are able to administer their medication at Sick Bay.

We require a letter from the prescribing medical professional, the medication and you will need to complete a Medication Authority Form.

Please contact the office to arrange.

## CONSENT FORMS/EVENTS

Please ensure all notes are returned by the due date listed on your child's note.

We will NOT be accepting forms returned after the due date.

If any special considerations need to be made please contact the office.

# SCHOOL BREAKFAST CLUBS PROGRAM



Breakfast Club runs on a Tuesday and Thursday morning from 8am - 8:30am.

Breakfast Club is held in the Gym foyer and is run by our terrific staff using food supplied by Foodbank.

## **FOODBANK**

Foodbank help supply many items for our students and families. The wonderful Education Support staff Mrs P orders and distributes all the fresh fruit we get delivered for every class and ensures there are spare food items for children who may have forgotten their food.

Any families who require any additional food products should notify the office or Leadership for any assistance. Foodbank offer a range of supports, we are here to help families as much as we can.

# MOBILE EXERCISE PHYSIOLOGY



## Areas of Interest

- **Paediatric** - ASD, Down syndrome, strength and fitness for children and teens.
- **Neurological** - Parkinson's, Stroke, Cerebral Palsy and Multiple Sclerosis.
- **Older Adults** - Falls prevention, functional strengthening.
- **Other** - Diabetes, Musculoskeletal pain, Depression, and Anxiety.



## Qualifications

- **Bachelor** of Exercise Science
- **Master** of Clinical Exercise Physiology



## Areas we Service

- **Western** Suburbs of Melbourne
- **Northern** Suburbs of Melbourne

Home visits, local parks, or gyms and leisure centres.



## Benefits of Exercise Physiology

- Improved Strength, Mobility, and Function.
- Pain Reduction.
- Falls Prevention & Healthy Ageing.
- Improved Mental Health & Wellbeing.
- Improved Cardiovascular Health.
- Improved Gross & Fine Motor Skills.

## REGISTERED NDIS PROVIDER



Contact Malek on 0434 081 112



[info@ahar.com.au](mailto:info@ahar.com.au) for enquiries



[www.ahar.com.au](http://www.ahar.com.au) for our referral form

# LIT

**24 APR – 3 MAY**  
**EVERY NIGHT**  
**6PM – 10PM**  
WYNDHAM PARK  
FREE ENTRY  
[WYNDHAM.VIC.GOV.AU/LIT](http://WYNDHAM.VIC.GOV.AU/LIT)

Proudly presented by



We're excited to announce that Wyndham City's much loved and **FREE** light festival, **LIT**, is returning to Werribee this Autumn with brand-new installations for everyone to enjoy!

## Event Details:

- **Dates:** 24 April – 3 May, Every night
- **Sensory Friendly Night:** Monday 27 April
- **Time:** 6pm – 10pm
- **Location:** Wyndham Park, Werribee City Centre
- **Cost:** Free – no bookings required

As the sun sets, Wyndham Park will transform into a glowing wonderland. With something to spark everyone's imagination from illuminated installations to mesmerising projections and even a cheeky Cassowary or two! We're lighting up a little earlier this year with new event hours from 6pm-10pm, outside of daylight-saving time, so you can even pop down for a quick visit on a school night and still be in bed at a reasonable hour.

There are so many incredible installations and artworks to explore at LIT this year, right here in Werribee! Make a night of it by visiting local restaurants and takeaway spots nearby.

## SAFETY TIPS AROUND SCHOOL CROSSINGS

### Driving To and From school

- Always park legally and avoid dangerous maneuvers like U-turns and three point turns at or near the crossing.
- Always be alert for children and pedestrians.
- Children should exit the side of the car that is on the kerb side of the road **away from passing traffic at all times.**

### Walking To and From School

- Plan your trip to school so that you are crossing the road at safe places, such as School Crossings.
- Always hold your child's hand up until the age of eight.
- Talk to your children about Stop, Look, Listen and Think, every time they cross the road.
- Drop off and pick up your child near the school gate, avoid calling them from across the road.



## COMMON PARKING ISSUES AROUND SCHOOL CROSSINGS

To assist in keeping School Crossing areas a safe place for pedestrians and School Crossing Supervisors, Parking Officers monitor and patrol School Zones. Please find a list of common reasons for infringements below:

### Double parking

- Do not stop next to another vehicle already parked next to a kerb, even if you are just quickly stopping to let a passenger in or out.

### No Stopping Signs

- You must not park or stop in a No Stopping area for any reason.

### School Crossings

- Do not park, or stop within or on a school crossing while it is in operation.

### Bus Stop and Bus Zone Signs

- These areas are to be kept clear for school buses and public transport buses only

### Nature Strips, Footpaths and Reservations

- Do not stop or park on nature strips, footpaths or reservations as it can create unsafe situations for children, as well as cause damage to council infrastructure.

### Driveways

- Do not park fully or partially across a driveway, be respectful of residents that live in the area.

**\*If you would like more information relating to Parking Laws, please visit  
Wyndham City: [www.wyndham.vic.gov.au](http://www.wyndham.vic.gov.au) or  
VicRoads: [www.vicroads.vic.gov.au](http://www.vicroads.vic.gov.au)**



## STOP LOOK LISTEN THINK

Regardless of your child's age or experience, to cross a road safely they should be taught to:

1. Stop at the kerb, not on the road.
2. Look in all directions for approaching traffic.
3. Listen for any vehicles coming.
4. Think about if it is safe to cross the road.

**STOP**

**LOOK**

**LISTEN**

**THINK**

## SAFETY AROUND SCHOOLS

Children's crossings are usually part-time crossings that operate before and after school hours. When in use, red flags displaying the words **CHILDREN CROSSING** are used. Outside of these times, the area is not a pedestrian crossing.

During peak school zone times we ask parents and carers to take extra care to make sure they are parked safe and legally to ensure the safety of the children and themselves.

Watch for and obey the instructions of the School Crossing Supervisor who operates the school crossing.

School crossing supervisors need to have a clear field of vision in all directions around their crossing, so that they can spot approaching children and vehicles as soon as possible.



## SCHOOL CROSSINGS

### Pedestrians – Children and Adults

- When flags are displayed all pedestrians should use the crossing
- Always follow the instructions of the crossing supervisor.
- Make sure all traffic has stopped before stepping on to the crossing.
- Only cross when it is safe to do so and Stay Alert.

### Drivers and Riders

- Should always watch out for children and pedestrians near schools.
- Must not overtake a vehicle stopping or stopped at the crossing.
- Must approach at a speed slow enough to safely stop.
- Must stop if a hand held 'Stop' sign is displayed.
- Must proceed only when all children and adults, including the supervisor are off the road.

**Respect our school crossing supervisors. They do an essential job of keeping everyone safe.**

# Tuning in to Kids®

## Emotionally Intelligent Parenting

A parenting program for parents of children aged 3 - 10 years.

### Learn how to be better at:

- talking with your child
- understanding your child
- helping your child manage their emotions
- preventing behaviour problems in your child
- teaching your child to deal with conflict

Tuning in to Kids® shows you how to help your child develop emotional intelligence.

### Children with higher emotional intelligence:

- have greater success with making and keeping friends
- have better concentration at school
- are more able to calm down when upset or angry
- tend to have fewer childhood illnesses

**Emotional intelligence may be a better predictor of academic and career success than IQ!**

**Where:** Wyndham Vale IPC Health Meeting room 1  
510 Ballan Road, Wyndham Vale, VIC, 3024

**When:** Term 2

6 consecutive weekly sessions on Thursdays:

30<sup>TH</sup> April, 7<sup>th</sup> May, 14<sup>th</sup> May, 21<sup>st</sup> May, 28<sup>th</sup> May, 4<sup>th</sup> June

**Time:** 10am to 12pm

**Contact:**

Saloney Shah 0493 684 485

Divya Garg 0407 966 151





# FREE TRAVEL FOR KIDS

## NOW AVAILABLE



**JOHN LISTER**  
MP FOR WERRIBEE

*Grab your Youth myki  
card at Werribee or  
Wyndham Vale station!*

P: (03) 9741 1133 E: [john.lister@parliament.vic.gov.au](mailto:john.lister@parliament.vic.gov.au)

  @johnforwerribee

 Tenancy 3, 1-13 Watton St, Werribee